

Arizona's Economic Imperative:

The Impact of Latino Student Success

Michael M. Crow

September 23, 2015

Frank Lloyd Wright Ballroom, Arizona Biltmore



The Path

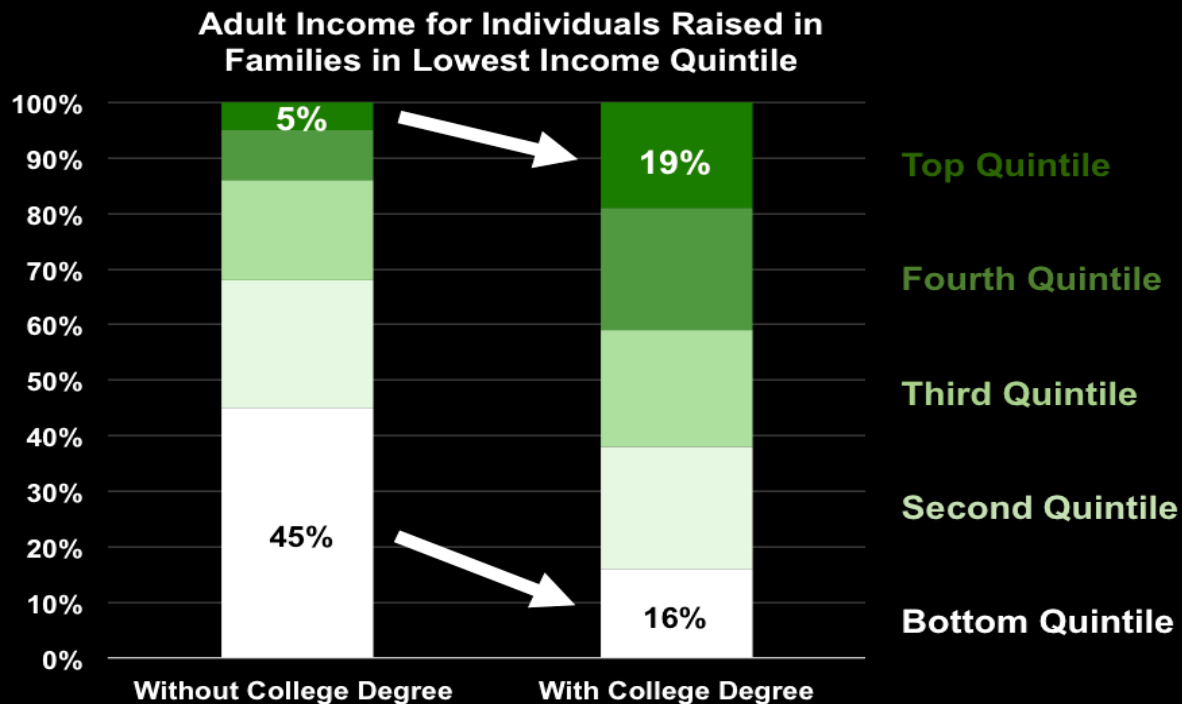
The American Dream

Hispanic Americans are more likely than others to identify education as path to achieving the American Dream. Still, only 15 percent of Hispanics have graduated from college and their incomes remain far below average.

Q: When you think about the American Dream, it is something which has...?



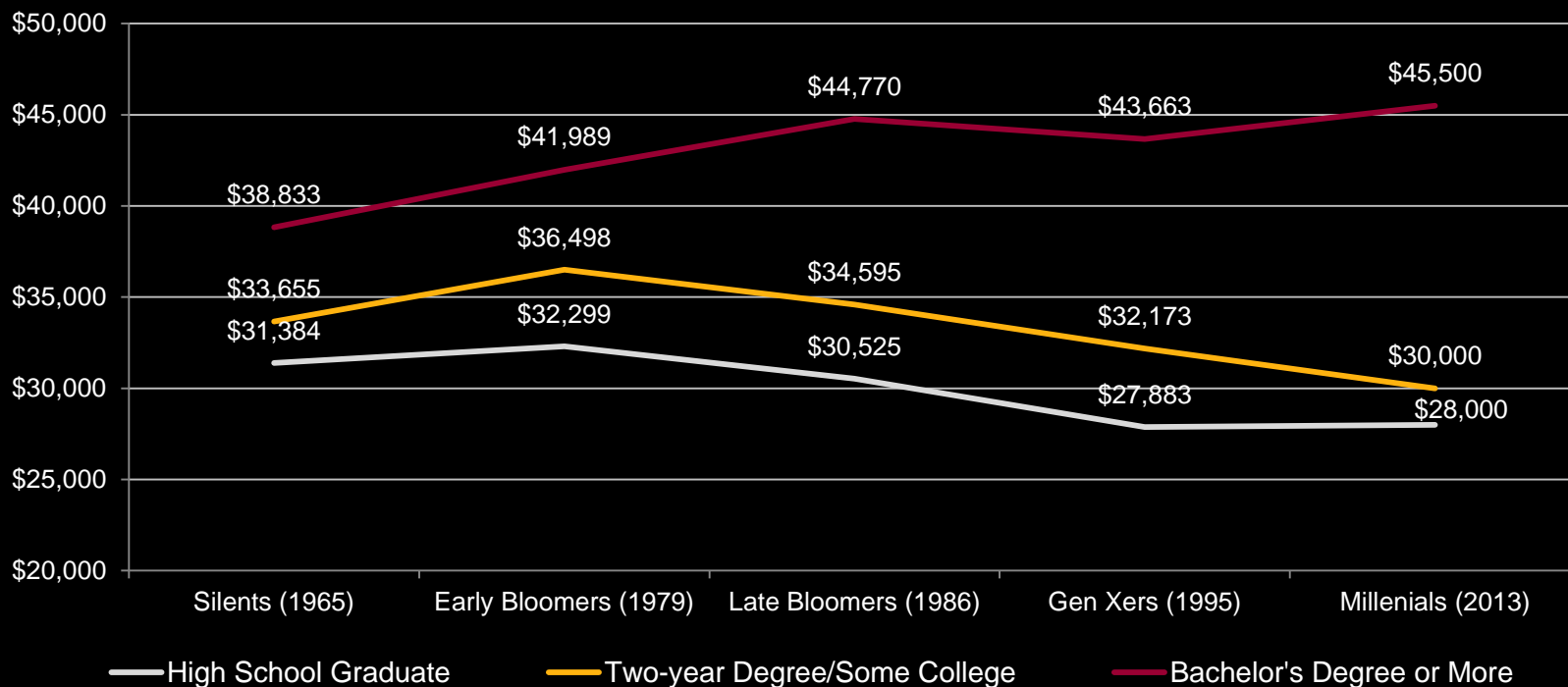
Higher Education and Social Mobility



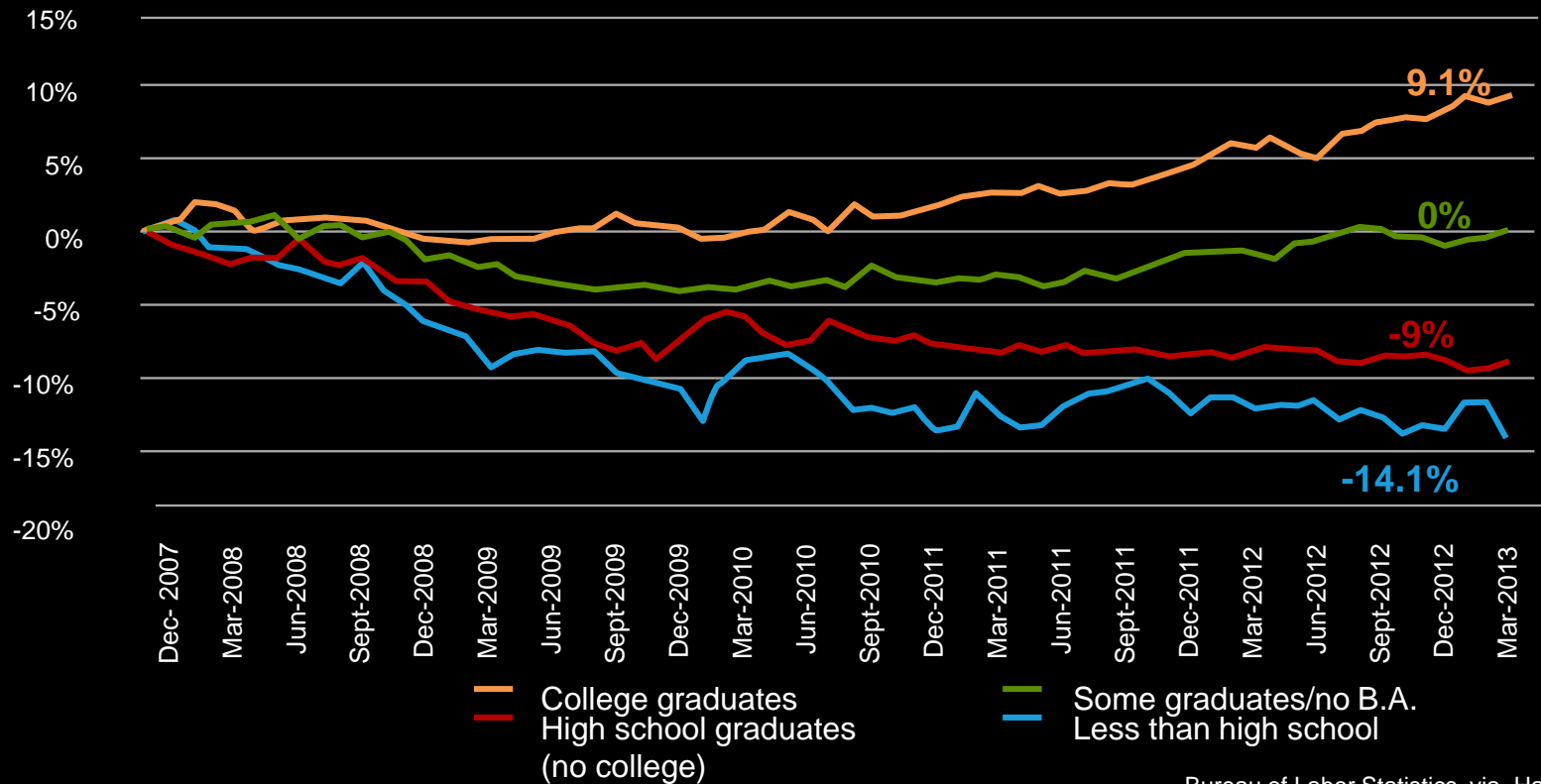
Economists put the rate of return of a degree in 2012 at 15%, **far above the return on stocks and bonds.**

Rising Earnings Disparity Between Young Adults With and Without a College Degree

Median annual earnings among full-time workers ages 25 to 32, in 2012 dollars.



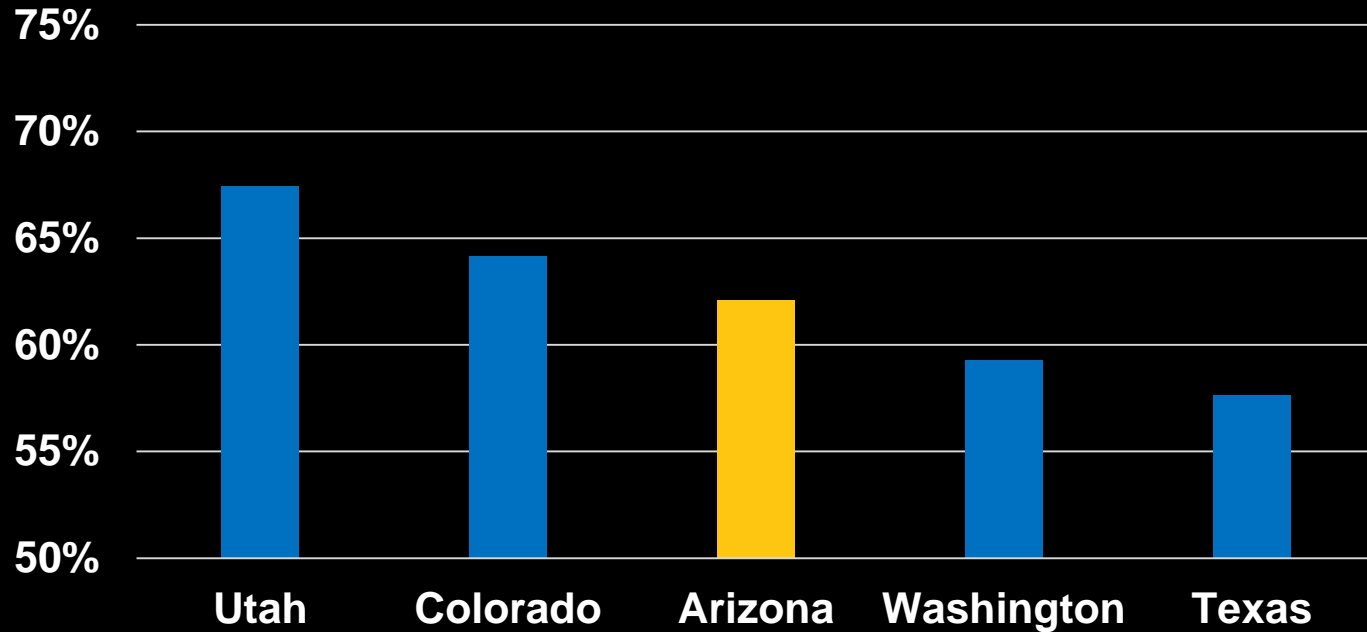
Percent Change in Employment Since Start of Recession, Sorted by Educational Attainment



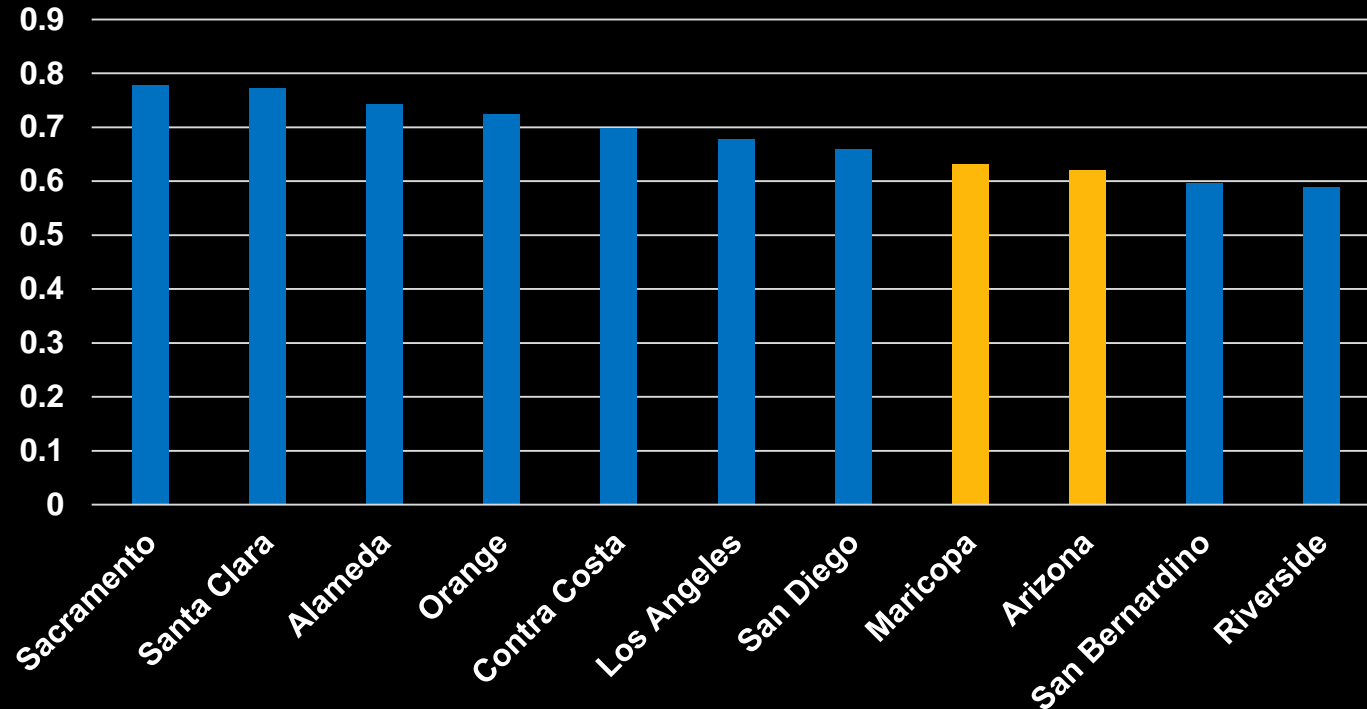
Recovery from the Great Recession
has not occurred for workers
without a college degree.

What about Arizona?

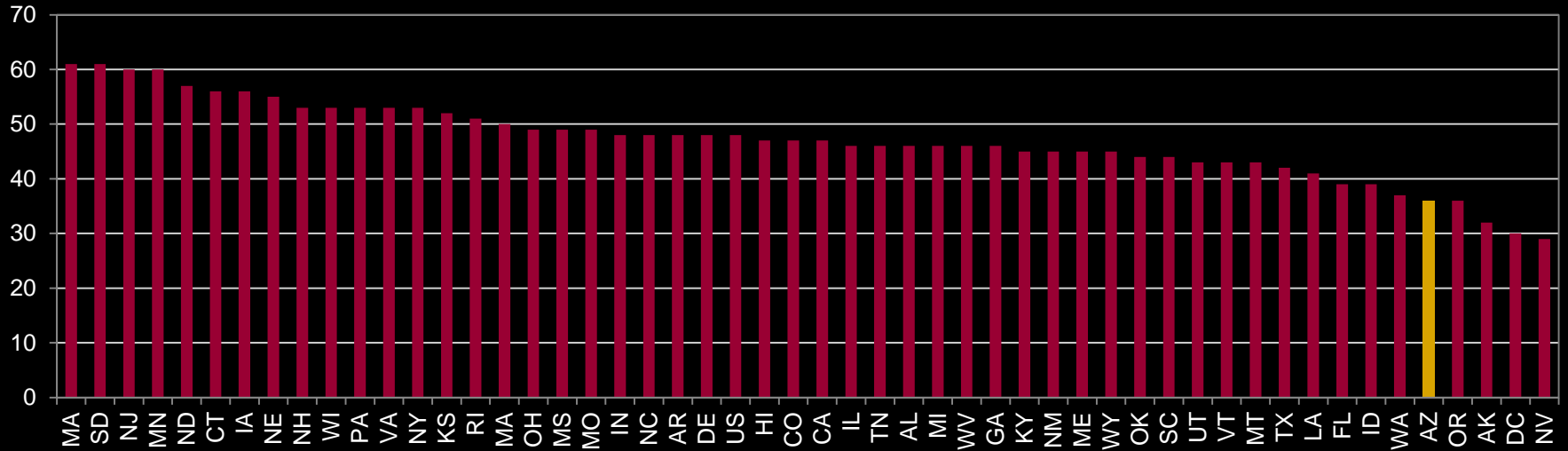
Undergraduate Enrollment as Percent of Population Aged 18-24 Years



Undergraduate College Enrollment as Percent of 18-24 Year Old Population, 2011-13



Percentage of All Youths Enrolling in Postsecondary Education



College Participation for Low-Income Students - 2013



38%

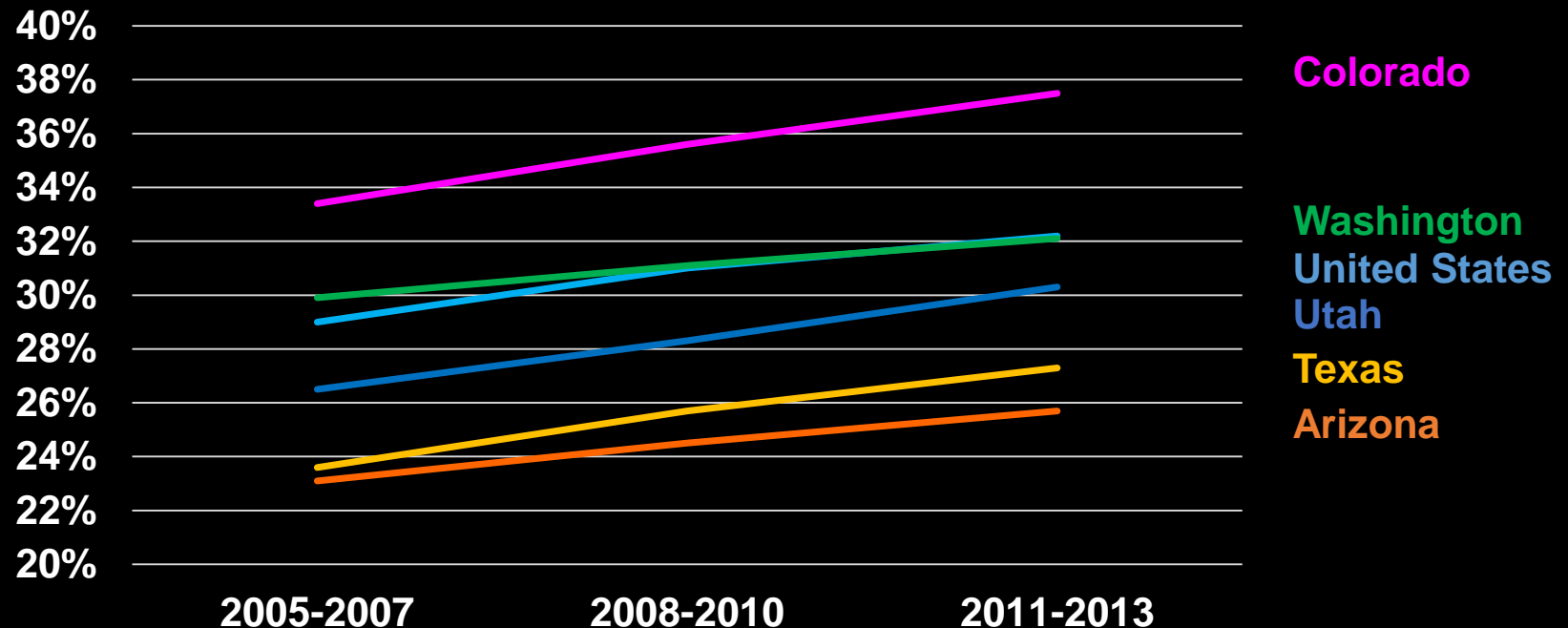
college participation
rate for low-income
students in US



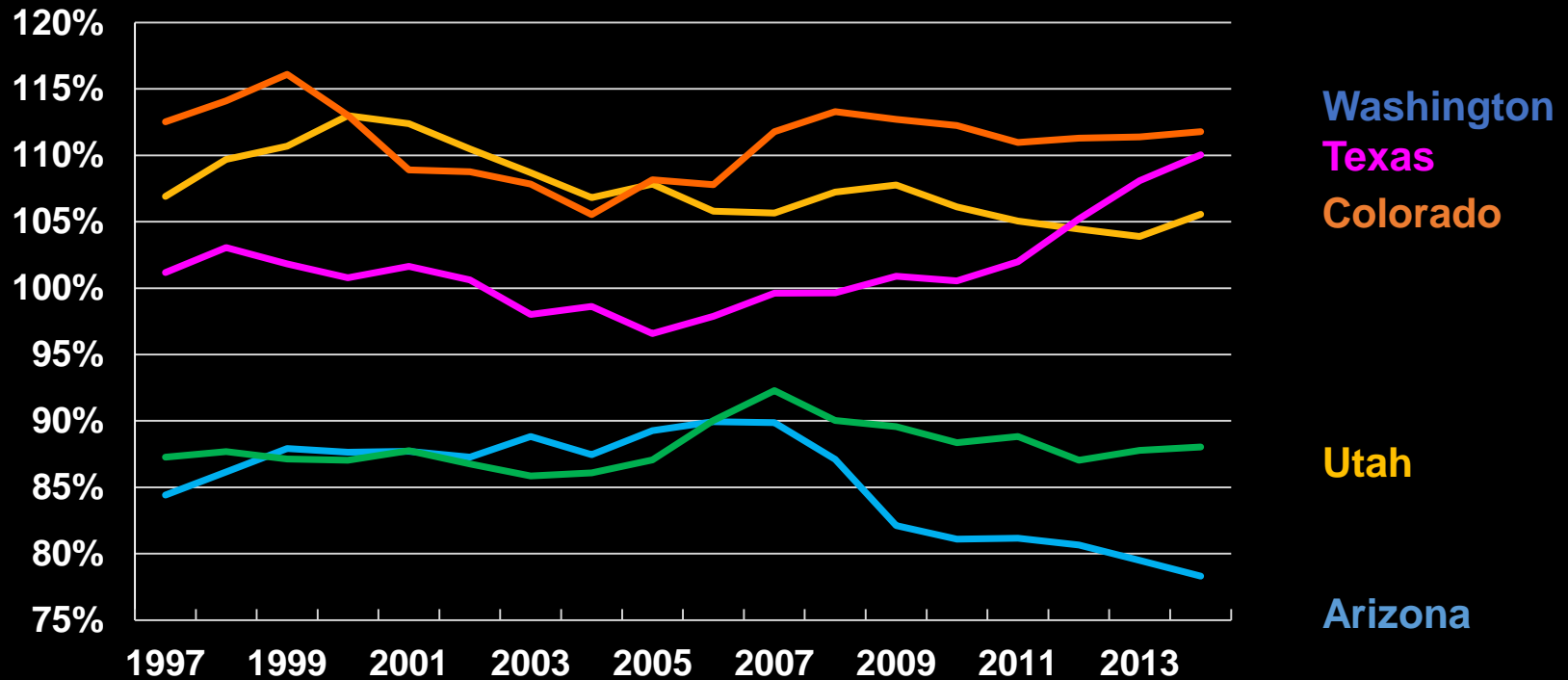
29%

college participation
rate for low-income
students in AZ

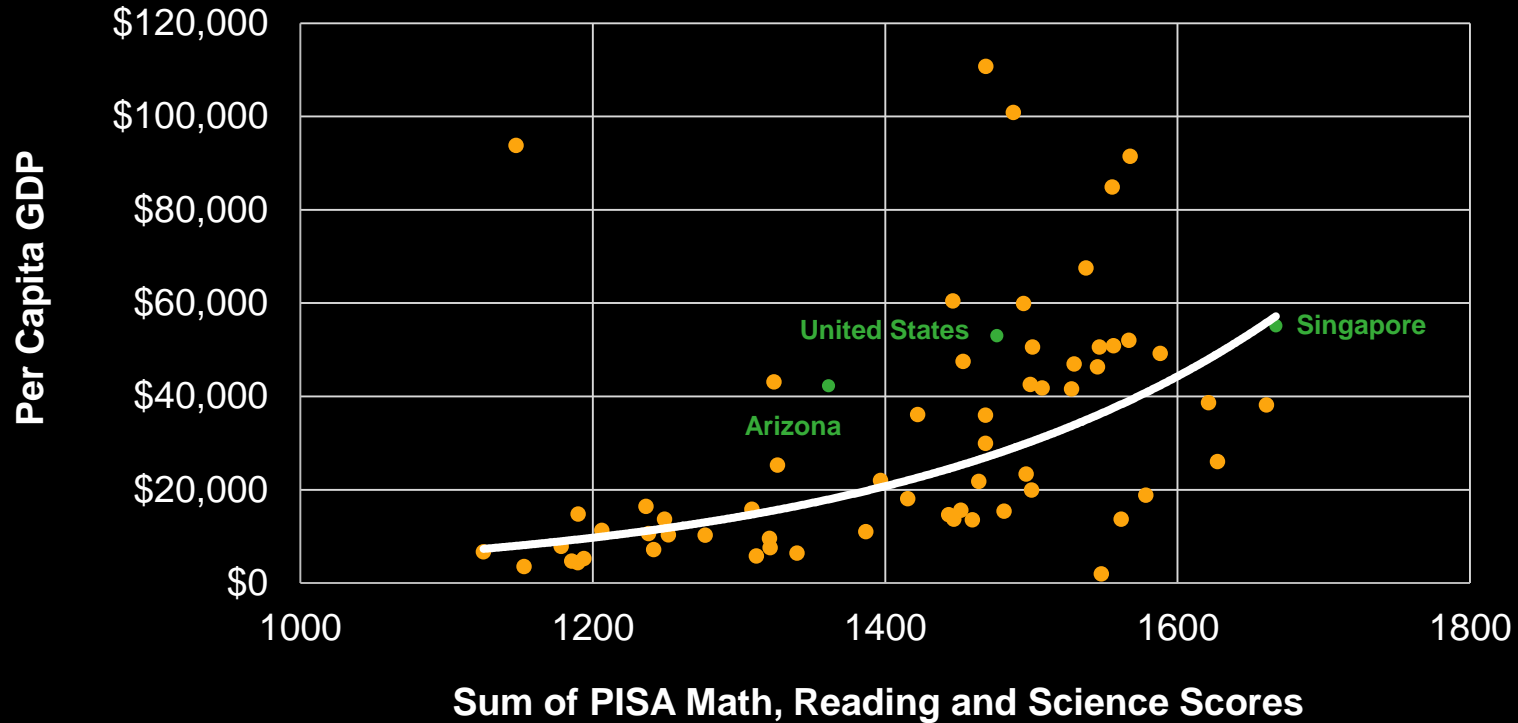
Bachelor's Degree Attainment for Population Aged 25-34 Years



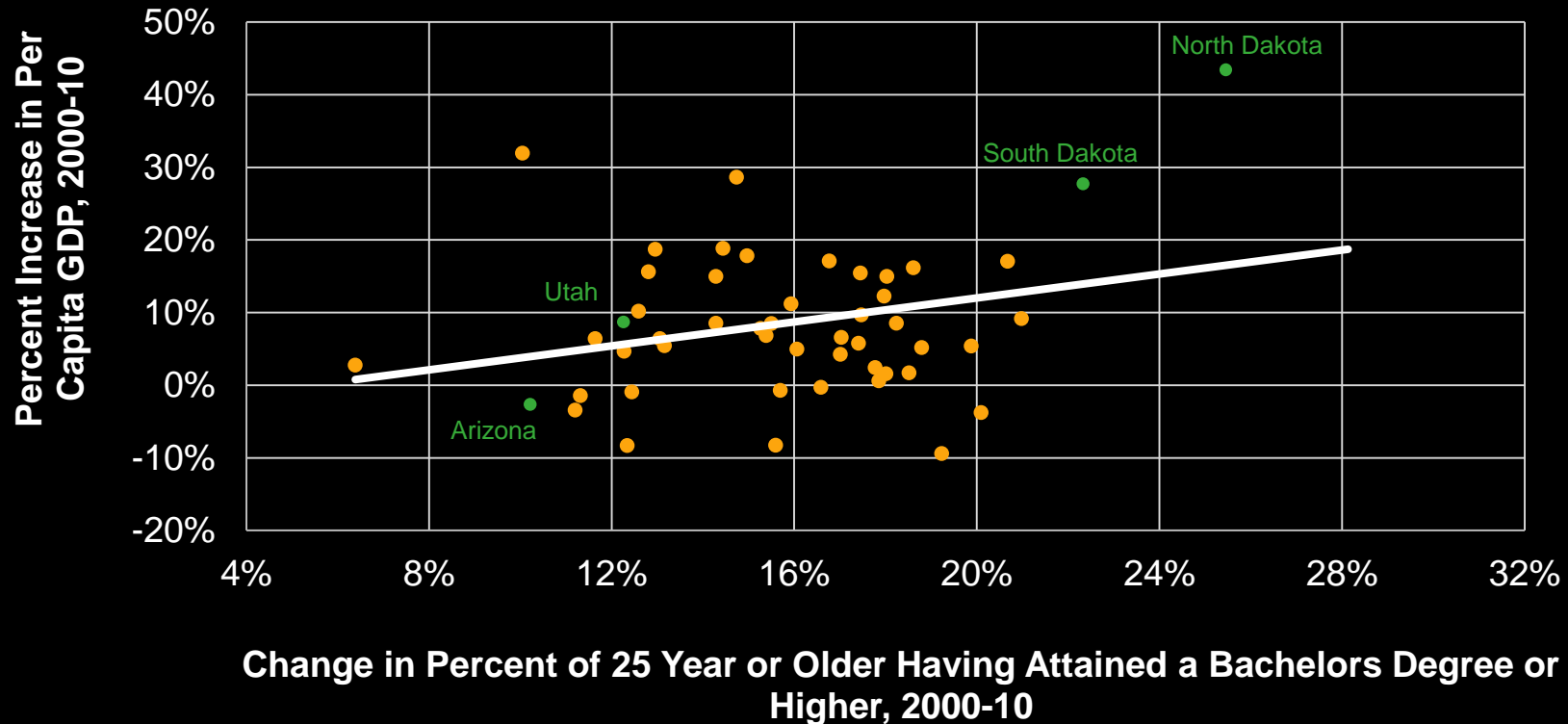
Per Capita GDP Relative to US Average, 1997-2014



Education and Economic Growth in OECD Countries

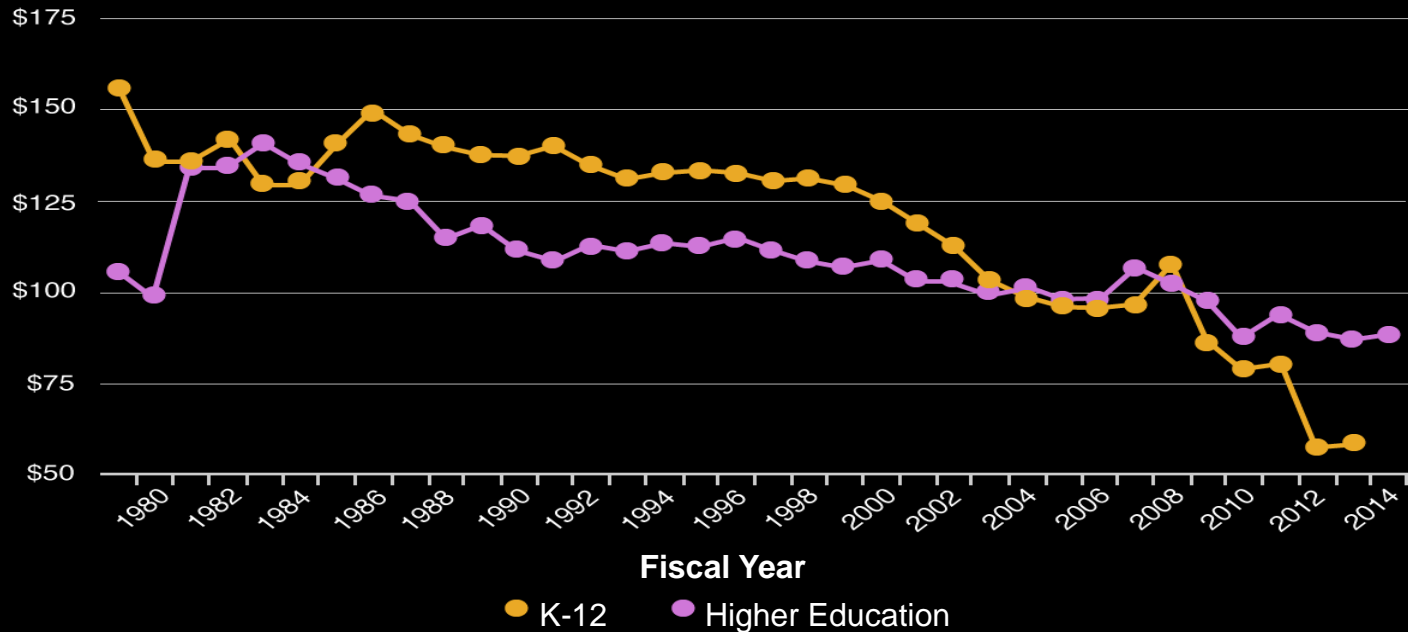


Relationship between Change in Educational Attainment and Economic Development in US States, 2000-2010



State Investment

Education Appropriation Per Student Per \$1,000 of Per Capita Personal Income, Arizona State Government Fund



An estimated **68%** of all jobs in Arizona will require post-secondary education by 2020.

55,000 jobs open up every year
requiring training beyond high school.

Arizona sends **32,000** high school
graduates to college, and **25%** of those
are not prepared for college-level work.

A New Economy Requires a New Kind of University

ASU Charter

ASU is a comprehensive public research university, measured not by whom it excludes, but by whom it **includes** and how they **succeed**; advancing research and discovery of **public value**; and assuming **fundamental responsibility** for the **economic, social, cultural, and overall health** of the communities it serves.

ASU Goals

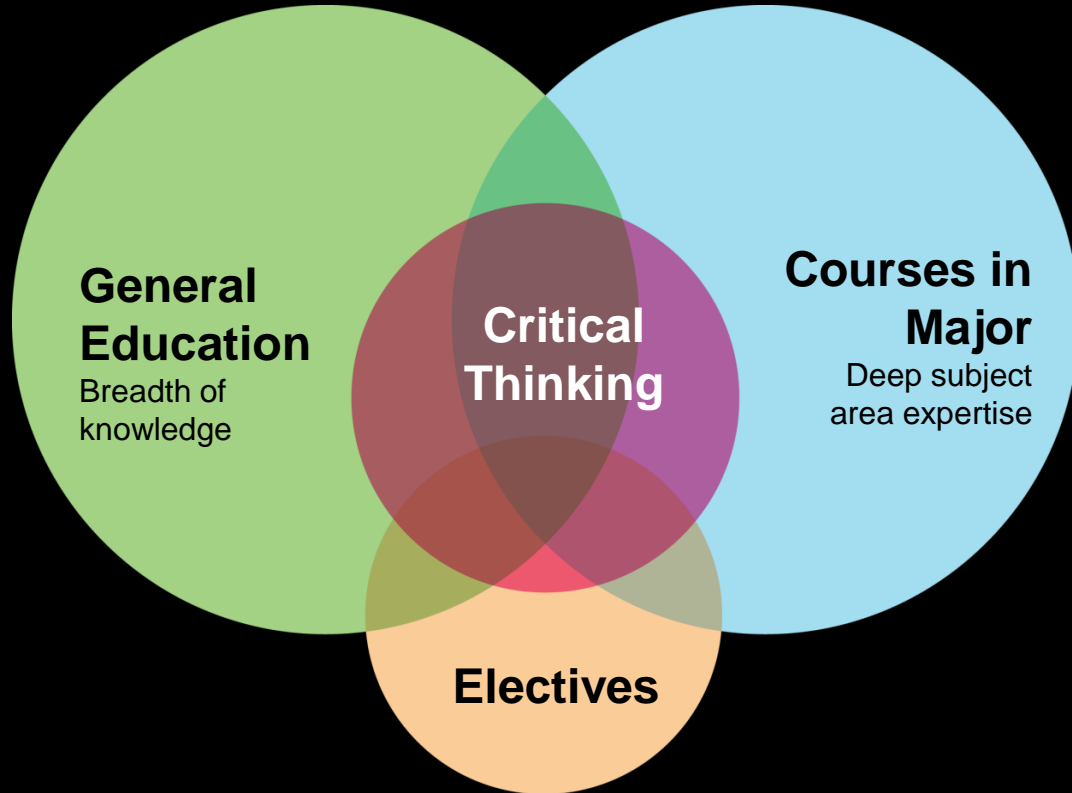
Demonstrate leadership in **academic excellence** and **accessibility**

Enhance our **local impact** and **social embeddedness**

Establish ASU as a **global** center for **interdisciplinary** research, discovery and development by 2020

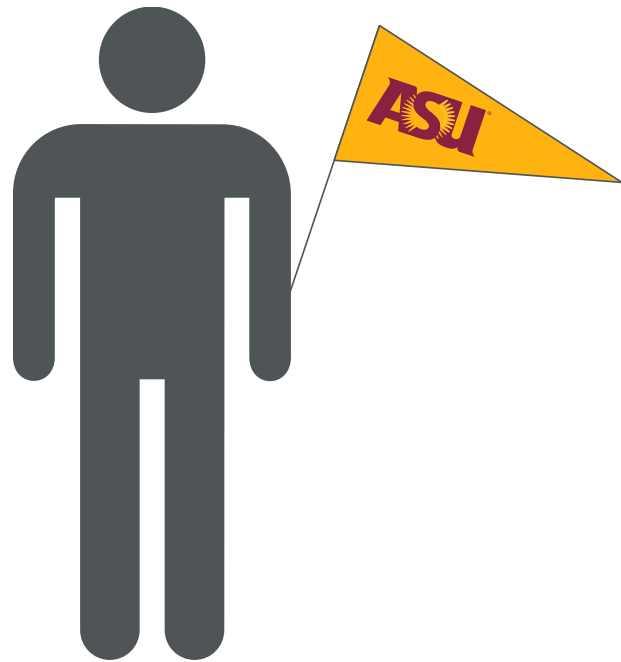
Establish ASU as a **global** center for **interdisciplinary** research, discovery and development by 2020

Master Learner



39%

are first-generation college students



ASU Preparatory Academy



ASU Preparatory Academy Demographics

nearly
2,000
total students

1,137*
at Phoenix

* 76% of Phoenix students
qualify for free and reduced lunch

839
at Polytechnic

ASU Preparatory Academy Phoenix Performance

 improved achievement
levels across all grades

23%

in Reading

3.7% overall average
growth in state

24%

in Math

3.6% overall average
growth in state

ASU Preparatory Academy Graduation Rates



ASU Prep Rates

98% 4-year HS
graduation rate

92% admitted to a 2 or 4-year
college or university
■ 76% admitted to 4-year
degree granting universities

Arizona / National Rates

75% average 4-year HS
graduation rate in state

66% national college going rate
entering a 2 or 4-year college
or university within 12 months
of graduating high school
■ 53.5% in Arizona

ASU Prep Students (Polytechnic and Phoenix) Admitted to Arizona State University

72% overall admitted into ASU

42% admitted to Barrett,
The Honors College

ASU Preparatory Academy Polytechnic Performance

“ASU Prep Polytechnic High School is one of the top 3 performing schools in Phoenix.”

- Phoenix Business Journal (2015)



outpaces the state
on average across
all grades by

20%

in Reading

28%

in Math



me3

A New Tool: me3

Asks simple questions about student **interests**

Pairs those interests with possible career options and **college majors**

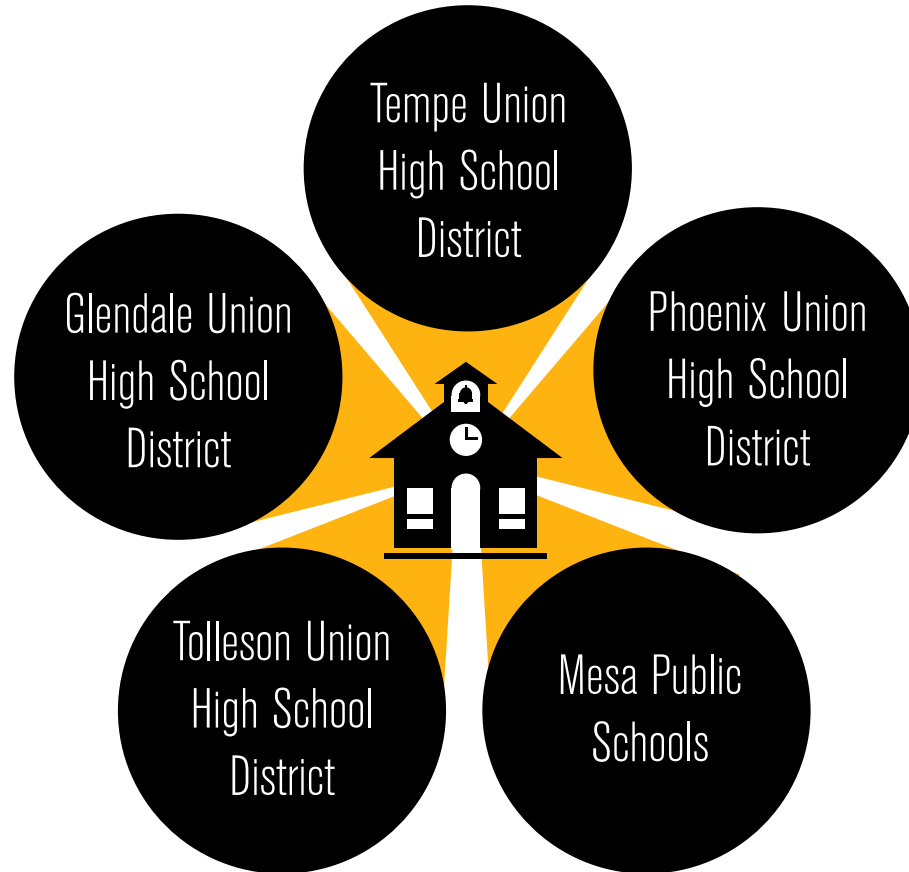
Identifies what **high school classes** are needed to be accepted and **when to apply** to college

Gives insights about **life after college**

Access ASU



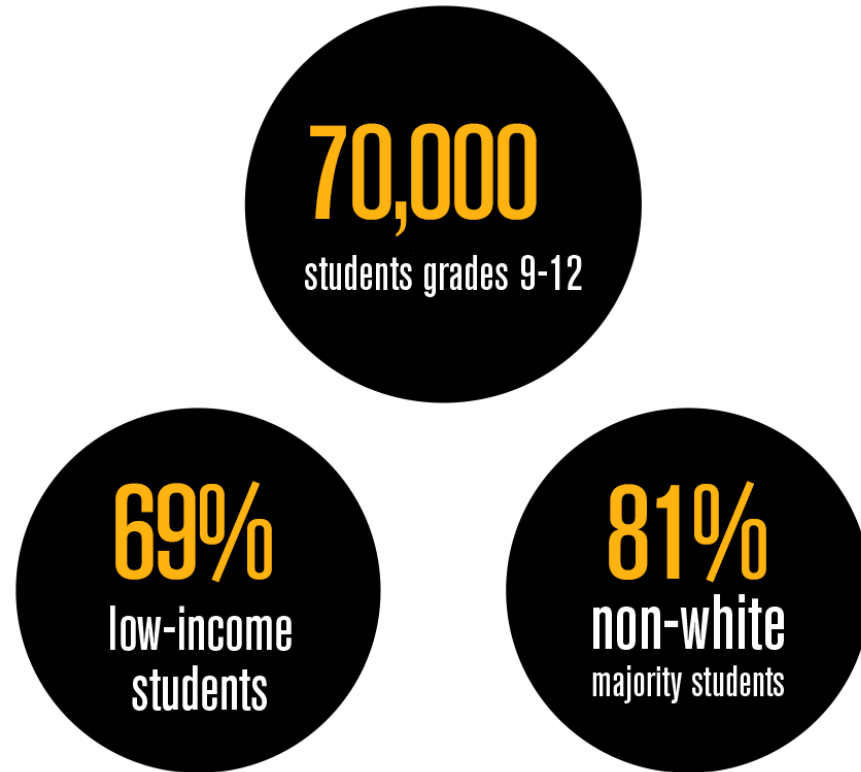
Access ASU Partner School Districts



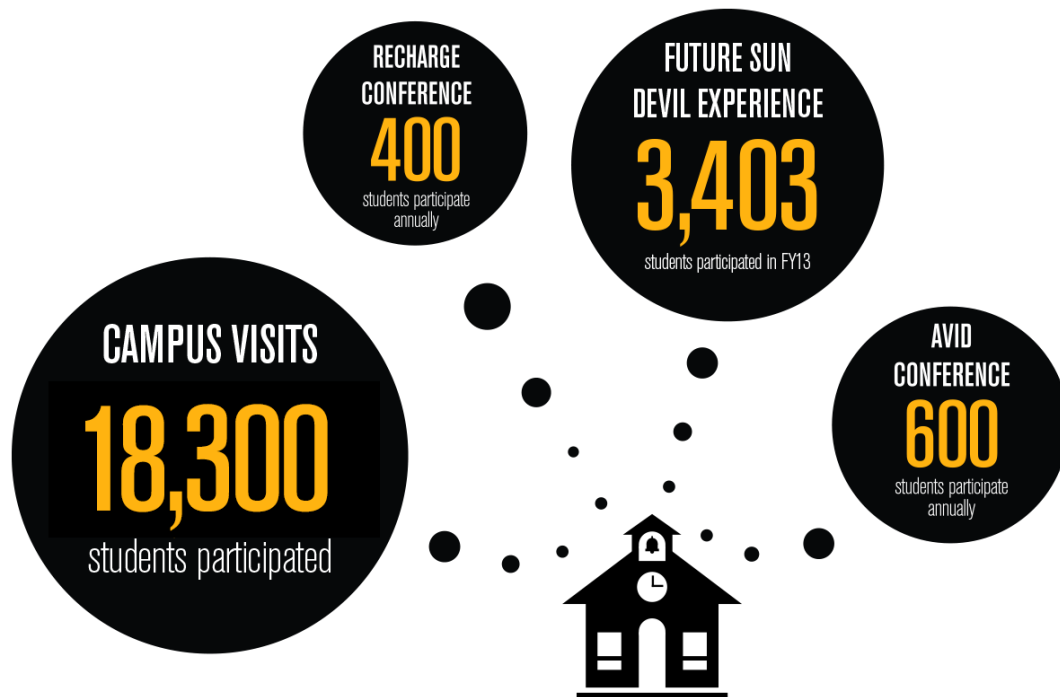
Access ASU Partner Schools Population



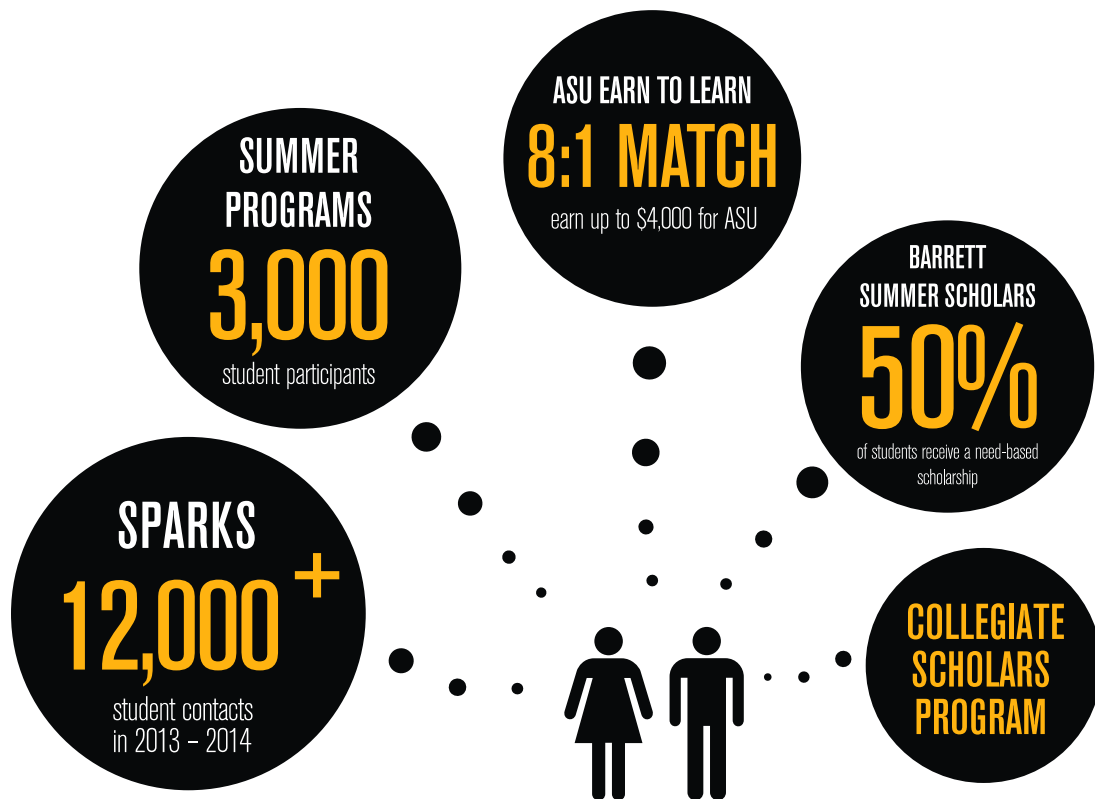
Access ASU Partner Schools Population



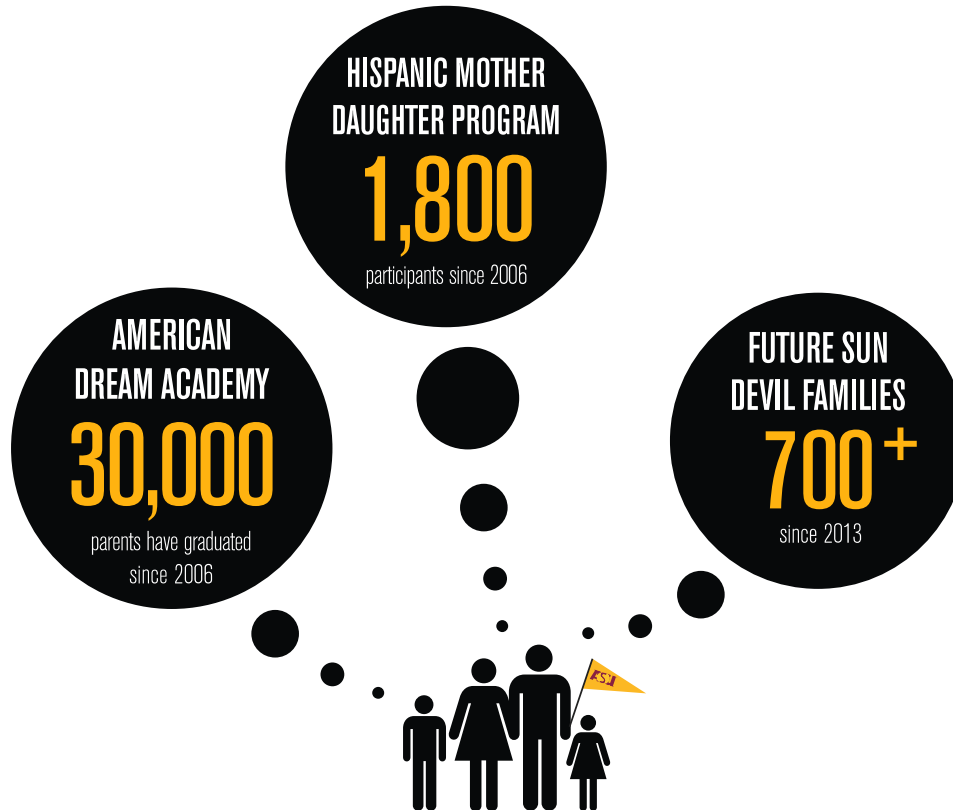
Access ASU Initiatives: **Schools**



Access ASU Initiatives: Students



Access ASU Initiatives: Families



College Readiness

High School Seniors



Partner Districts 3.24
ASU AZ Resident 3.30



Partner Districts 1,095
ASU AZ Resident 1,119

Financial Support to Partner District Students

\$16,456,575

Institutional awards offered to freshmen, Fall 2014

of enrolled
students

73%

receive New American
University Scholar Awards

94%

receive Institutional
Awards



Partner School Students

85% persistence rate at ASU for first-time freshmen

84% for all ASU FTF

65% six-year graduation rate

63% for full ASU population

TRIO Student Support Services

Upward Bound

Veterans Upward Bound



ASU Pathway Programs



Community College

Many see community colleges as the bridge for earning a bachelor's degree:

Maricopa Community Colleges

Fall 2014 Enrollment = **128,212 (58,049 FTSE)**

Whites	48%
Latinos	26%

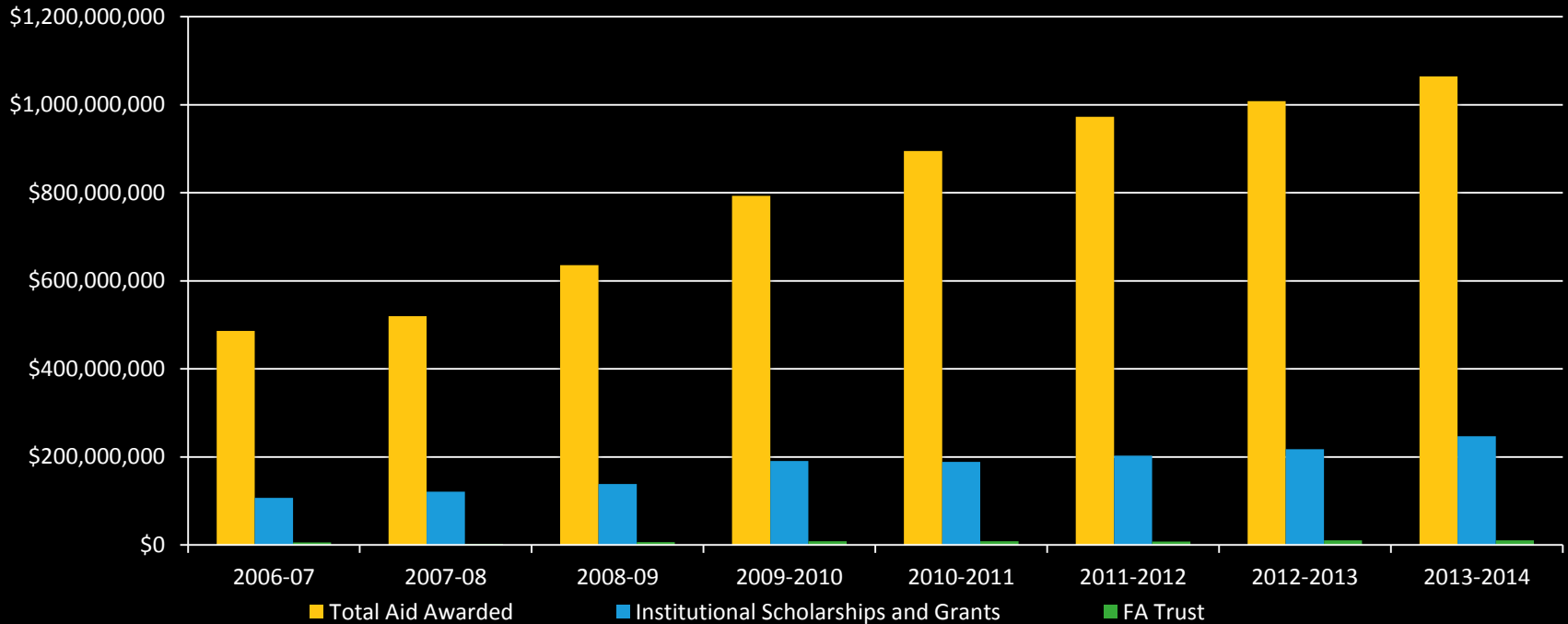
Community College

In 2012-13, about 8,700 students with 12 or more MCC credits earned a bachelor's degree from an Arizona public university.

ASU Financial Aid Awarded by Aid Year

All Students

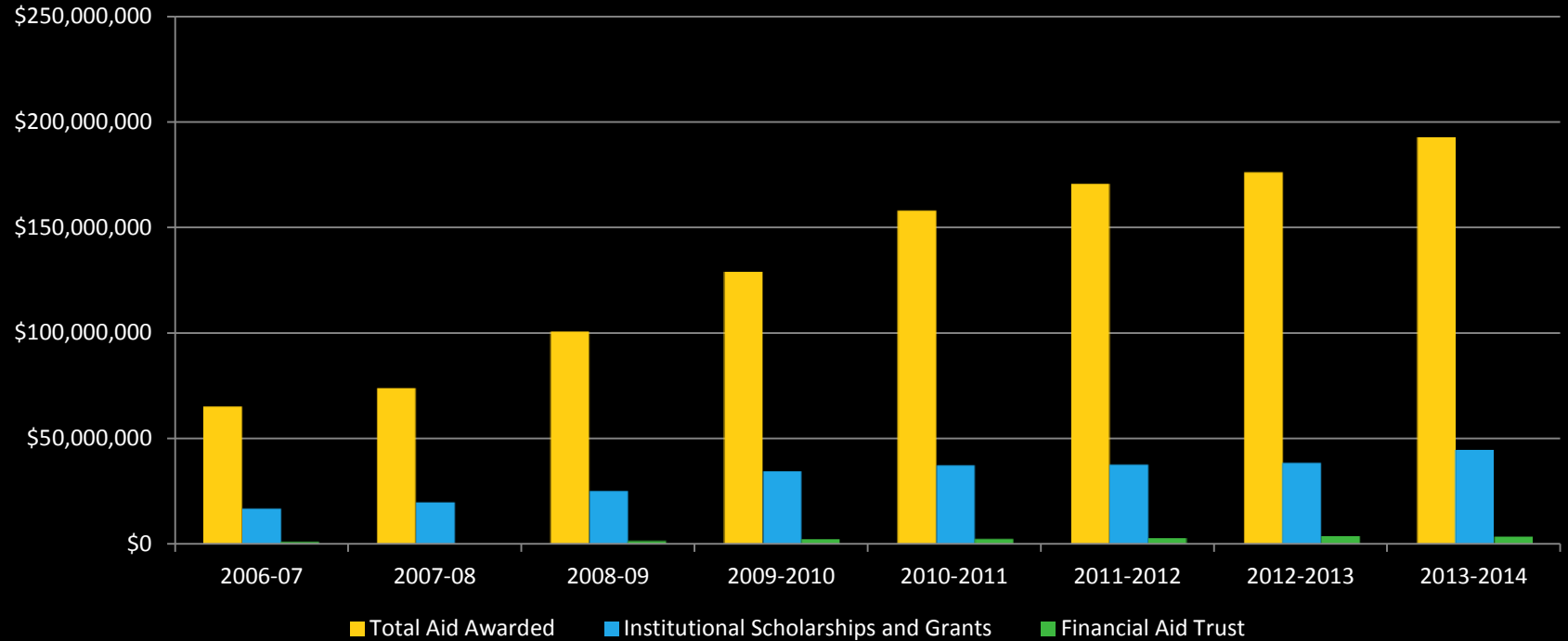
2006-2014



ASU Financial Aid Awarded by Aid Year

Latino Students

2006-2014



Latino Entrepreneurship

Despite being Arizona's fastest growing cultural group, it is under-producing Latino entrepreneurs.

Latinos comprise **30%** of Arizona population, but only **13%** of Arizona business owners.

There are more than **95,000** “disconnected youth” – not working or in school – in metro Phoenix alone (**5th** in the nation).

Economic growth and prosperity for the Latino community and all of Arizona requires a change in these numbers.

Student Entrepreneurship



Edson Entrepreneurship Initiative



ASU Innovation Challenge



Startup Summit



Changemaker Central

Community Entrepreneurship



Impact of Ignoring the Latino Education Gap

- Inability for Arizona to economically compete
- Stagnating average incomes statewide
- Diminished purchasing power
- Sluggish consumer demand
- Flat per-capita tax revenues
- More poverty
- More unemployment
- More Arizonans without health insurance
- Greater demand for government services

How do we work together to achieve
the **outcomes** Arizona needs?



michael.crow@asu.edu